

Process Theology and Spiritual Care

Instructor: Rev. Dr. Jason C. Whitehead
Contact: jwhitehead@iliff.edu
Class: Wednesdays, 6:00-9:30



Course Description: This class explores the use of process thought and theology as a lens for understanding human beings and how to care for them. Readings, postings, class discussion, and a constructive theological paper will all inform how we explore this speculative metaphysic, as well as, how it might creatively inform spiritual care.

Course Goals



Construct a strengths-based theological anthropology through a process thought or theological lens that pays attention to imaginative and hopeful spiritual care.

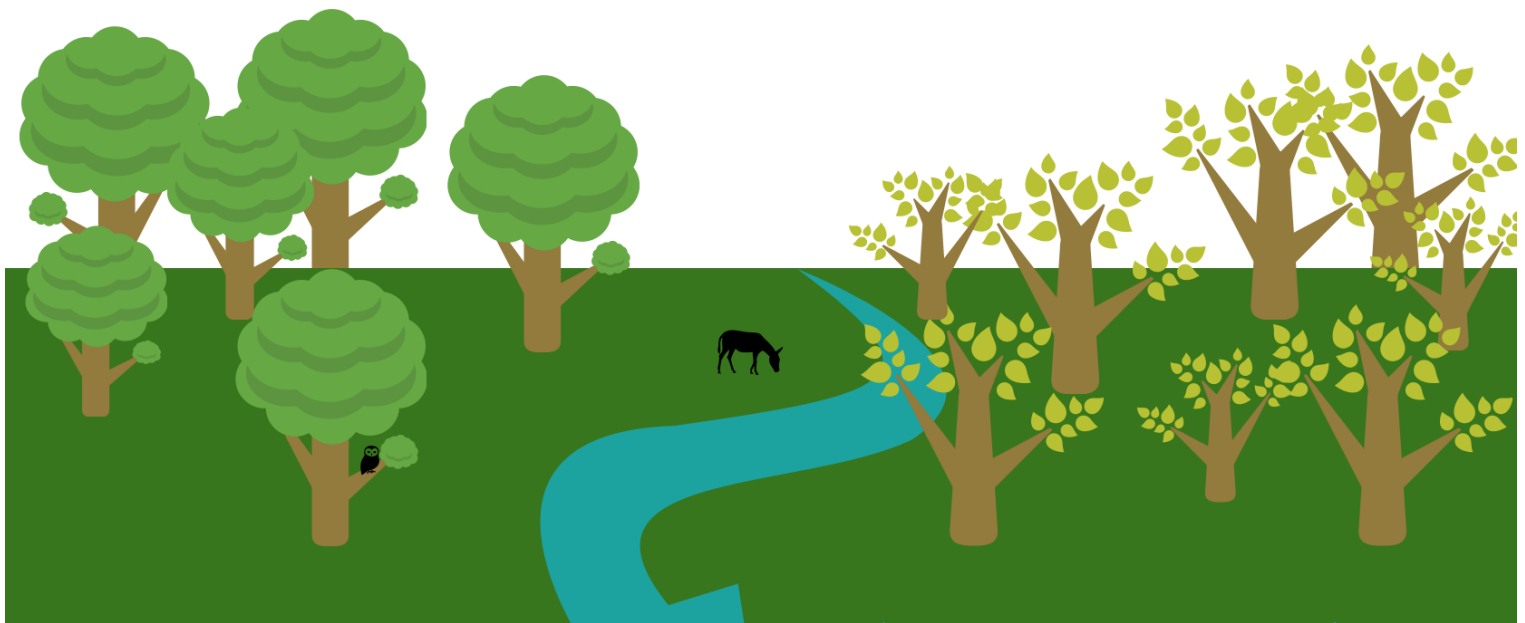


Develop an understanding of the terminology and unique relational components that comprise a process thought/theological worldview.



Explore the creative aspects of process thought/theology as they enhance the ways in which we understand pastoral theology and practice spiritual care.

"A momentary happening or event - a drop of experience - in which many events of the past actual world "become one" through a process of subjective unification. These are the most fundamental units of reality, the ultimately real entities of the universe." (McDaniel & Bowman, Handbook of Process Theology, p.5)



Required Texts

Artson, B. (2013). God of becoming and relationship: The dynamic nature of process theology. Woodstock, VT: Jewish Lights Publishing.
ISBN13: 9781580237130 (Amazon Link)

Coleman, M. (2011). Creating women's theology: A movement engaging process thought. Eugene, OR: Wipf & Stock Publishers.
ISBN13: 9781610971775 (Amazon Link)

Mesle, R. (2008). Process-relational philosophy: An introduction to Alfred North Whitehead. West Conshohocken, PA: Templeton Foundation Press.
ISBN13: 9781599471327 (Amazon Link)



Assignments

- Weekly reflections and/or questions related to the readings and how they impact your understanding of theology, anthropology, and/or spiritual care. (20%)
- Constructive conversations + reflections (40%, 4@10% each)
- Master's students will write one 8-10 page paper or book review (40%)
- Doctoral students will develop and write a 10-15 paper and present it during the final class.

Course Outline (Readings Forthcoming)

- Week 1 - Process Terms and Definitions
- Week 2 - Introduction to Process Thought/Philosophy
- Week 3 - Introduction to Process Thought/Philosophy (cont'd)
- Week 4 - Process Theology
- Week 5 - Process Theology (cont'd)
- Week 6 - Process Anthropology
- Week 7 - Process Theology and the Problem of Evil
- Week 8 - Process Theology and the Spiritual Care of Individuals
- Week 9 - Process Theology and the Spiritual Care of Individuals (cont'd)
- Week 10 - Process Theology and the Spiritual Care of Communities

